

Features

- 2-way normally open operation
- For control of commercial and industrial gas burners
- Ideal for high pressure applications
- Brass body construction
- Mountable in any position

Fluid

Fuel Gas

Construction

| Valve Parts in Contact with Fluids | |
|------------------------------------|----------------------|
| Body | Brass |
| Seals and Disc | NBR |
| Core Tube | 305 Stainless Steel |
| Core and Plugnut | 430F Stainless Steel |
| Springs | 302 Stainless Steel |
| Shading Coil | Copper |

Electrical

| Standard Coil Class of Insulation | Watt Rating and Power Consumption | | | Ambient Temp. °F | Spare Coil Family | |
|-----------------------------------|-----------------------------------|------------|-----------|------------------|-------------------|----------------|
| | AC | | | | General Purpose | Explosionproof |
| | Watts | VA Holding | VA Inrush | | AC | AC |
| F | 10.1 | 25 | 70 | 32 to 125 | 238610 | 238614 |
| H | 10.1 | 25 | 70 | 32 to 140 | 238810 | 238914 |

Standard Voltages: 24, 120, 240 volts AC, 60 Hz (or 110, 220 volts AC, 50 Hz).
Optional High Ambient Temp: 140°F Class H coil with prefix HT.

Solenoid Enclosures

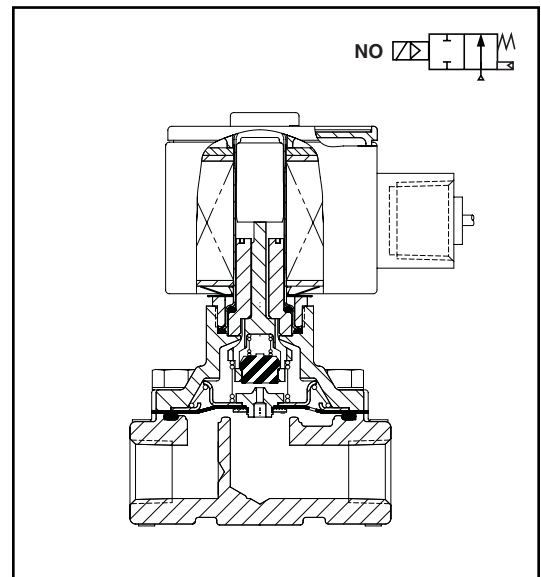
Standard: Watertight, Types 1, 2, 3, 3S, 4, and 4X with 1/2" conduit hub.

Optional: RedHat II - Explosionproof and Watertight. To order, add Prefix "EF" to catalog numbers. (e.g. EF8210G034)

Valve Response Time

Opening Time: Less than 1 second

Closing Time: Less than 1 second



Approvals

UL listed to standard 429 "Electrically Operated Valves," Guide Y10Z, File MP618, General Purpose Valves.

CSA Certified to:

Standard C22.2 No. 139 "Electrically Operated Valves," File 010381.

Specifications (English units)

| Pipe Size (ins.) | Orifice Size (ins.) | Cv Flow Factor | Gas Capacity ① Btu/hr. | Operating Pressure Differential (psi) | | Max. Fluid Temp. °F | Catalog Number | Const. Ref. | Agency | | | Wattage | Approx. Shipping Weight (lbs) |
|--|---------------------|----------------|---------------------------|---------------------------------------|------|---------------------|----------------|-------------|--------|----|-----|---------|-------------------------------|
| | | | | Min. | Max. | | | | UL | FM | CSA | | |
| COMBUSTION (Fuel Gas) - NORMALLY OPEN | | | | | | | | | | | | | |
| 3/8 | 5/8 | 2.8 | 150,000 | 0 | 125 | 180 | 8210G033 | 1 | ● | - | ● | 10.1 | 3.4 |
| 1/2 | 5/8 | 3.5 | 188,000 | 0 | 125 | 180 | 8210G034 | 1 | ● | - | ● | 10.1 | 3.4 |
| 3/4 | 3/4 | 5.5 | 295,000 | 0 | 125 | 180 | 8210G035 | 2 | ● | - | ● | 10.1 | 3.6 |

● = General Purpose Valve. ① 1" W.C. Drop @ 2" W.C. Inlet Pressure, 1,000 Btu/cu.ft. or more, 0.64 Specific Gravity Gas.

Specifications (Metric units)

| Pipe Size (ins.) | Orifice Size (mm) | Kv Flow (m³/hr) | Gas Capacity ① Btu/hr. | Operating Pressure Differential (bar) | | Max. Fluid Temp. °C | Catalog Number | Const. Ref. | Agency | | | Wattage | Approx. Shipping Weight (kgs) |
|--|-------------------|-----------------|---------------------------|---------------------------------------|------|---------------------|----------------|-------------|--------|----|-----|---------|-------------------------------|
| | | | | Min. | Max. | | | | UL | FM | CSA | | |
| COMBUSTION (Fuel Gas) - NORMALLY OPEN | | | | | | | | | | | | | |
| 3/8 | 16 | 2.4 | 150,000 | 0 | 8.6 | 82 | 8210G033 | 1 | ● | - | ● | 10.1 | 1.5 |
| 1/2 | 16 | 3.0 | 188,000 | 0 | 8.6 | 82 | 8210G034 | 1 | ● | - | ● | 10.1 | 1.5 |
| 3/4 | 19 | 4.7 | 295,000 | 0 | 8.6 | 82 | 8210G035 | 2 | ● | - | ● | 10.1 | 1.6 |

● = General Purpose Valve. ① 1" W.C. Drop @ 2" W.C. Inlet Pressure, 1,000 Btu/cu.ft. or more, 0.64 Specific Gravity Gas.

Capabilities Chart

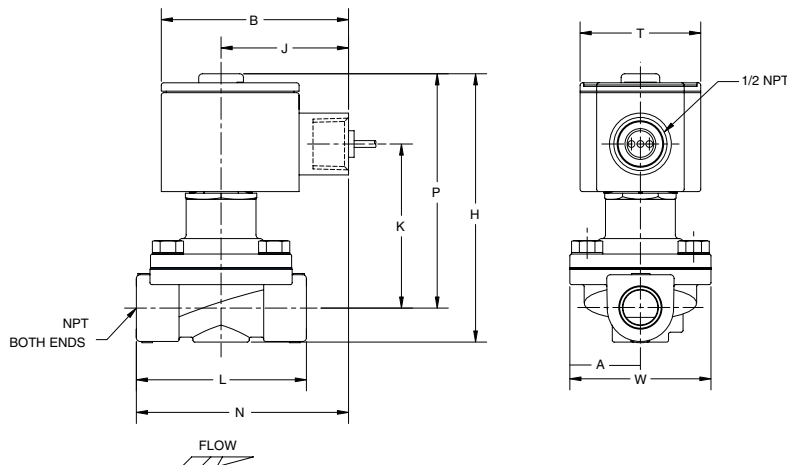
| Solenoid Options | | | | Base Catalog Number | Resilient Materials | Standard Rebuild Kit |
|------------------|------------|--------------|---------------------------|---------------------|---------------------|----------------------|
| NEMA Type 3-9 | High Temp. | Junction Box | Wiring Box Screw Terminal | Brass | NBR | AC |
| EF | HT | JB | JKF | 8210G033 | ● | 302334 |
| EF | HT | JB | JKF | 8210G034 | ● | 302334 |
| EF | HT | JB | JKF | 8210G035 | ● | 302335 |

● = Standard. Other options may be available. All option combinations may not be available.

Dimensions inches (mm)

| Const. Ref. | | A | B | H | J | K | L | N | P | T | W |
|-------------|------|------|------|------|------|------|------|------|------|------|------|
| 1 | ins. | 1.66 | 3.03 | 4.35 | 2.04 | 2.65 | 2.75 | 3.42 | 3.79 | 1.95 | 2.28 |
| | mm | 42 | 77 | 110 | 52 | 67 | 70 | 87 | 96 | 50 | 58 |
| 2 | ins. | 1.66 | 3.03 | 4.64 | 2.04 | 2.81 | 2.81 | 3.45 | 3.94 | 1.95 | 2.28 |
| | mm | 42 | 77 | 118 | 52 | 71 | 71 | 88 | 100 | 50 | 58 |

Const. Ref. 1, 2



Mountable in any position.

COMBUSTION